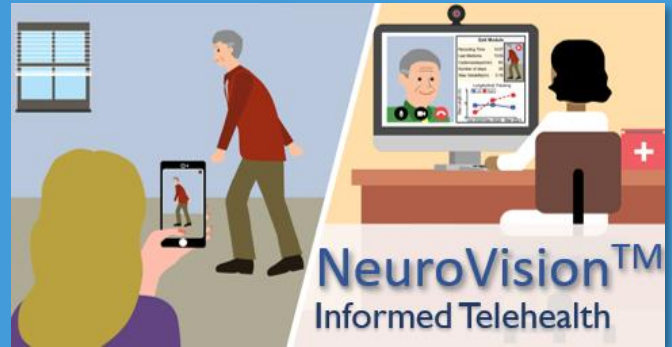




ALTEC *Movement Sciences R&D*

SEEKING VOLUNTEERS FOR PARKINSON'S RESEARCH STUDY



Do you have Parkinson's symptoms (tremor, slow movement, unsteady gait)? You may be eligible for a **1-3 hr research study** to evaluate a new smartphone technology that can aide remote telehealth care.

You May Qualify If You

- Are 35+ years of age
- Have Parkinson's disease
- Can ambulate

Compensation

\$20/hr including travel time.

Participation Involves

- Perform seated arm and leg movements; and gait
- Your movements will be recorded using a video camera.

Location

Delsys/Altec Inc.
23 Strathmore Rd
Natick, MA 01760

Free transportation available upon request.

Read more about us at

www.altecresearch.com

Contact Info

Bhawna Shiwani

(508) 545-8217

bshiwani@delsys.com

